

# 1-Bit Dual-Supply Unidirectional Bus Transceiver

## 1 FEATURES

- **Power-Supply Range:**  
 **$V_{CCA}$  and  $V_{CCB}$ : 1.65V to 5.5V**
- **$V_{CC}$  Isolation: If Either  $V_{CC}$  is at GND, Both Ports are in the High-Impedance State**
- **Low power consumption, 4 $\mu$ A Max**
- **Output drive up to  $\pm 24\text{mA}@3.0\text{V}$**
- **No Power-Supply Sequencing Required: Either  $V_{CCA}$  or  $V_{CCB}$  can be Ramped First**
- **$I_{OFF}$ : Supports Partial-Power-Down Mode Operation**
- **Extended Temperature:  $-40^{\circ}\text{C}$  to  $+125^{\circ}\text{C}$**

## 2 APPLICATIONS

- Industrial
- Enterprise
- Telecom, such as VOIP
- Personal electronic

## 3 DESCRIPTIONS

The RES74AUP1T34GW is 1-bit non-inverting bus transceiver uses two separate configurable power supply rails. The A port is designed to track  $V_{CCA}$ , which supporting operating voltages from 1.65V to 5.5V, and the B port supporting operating voltages from 1.65V to 5.5V while it tracks the  $V_{CCB}$  supply. This allows for universal low-voltage unidirectional translation between any of the 1.8V, 2.5V, 3.3V and 5V voltage nodes.

The RES74AUP1T34GW is designed for asynchronous communication between two data buses. The A bus is input side, the B bus is output side.

The RES74AUP1T34GW is fully specified for partial power-down applications using  $I_{OFF}$ . The  $I_{OFF}$  circuitry disables the outputs, preventing damaging current backflow through the device when it is powered down.

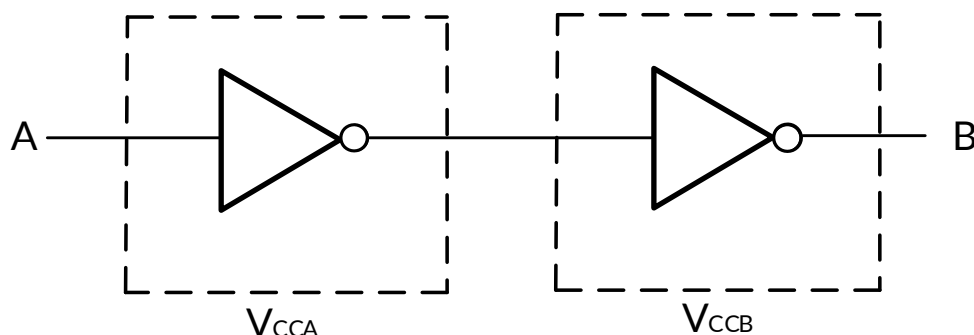
The RES74AUP1T34GW is available in Green SC70-5 packages. It operates over an ambient temperature range of  $-40^{\circ}\text{C}$  to  $+125^{\circ}\text{C}$ .

Device Information <sup>(1)</sup>

PART NUMBER	PACKAGE	BODY SIZE (NOM)
RES74AUP1T34GW	SC70-5	2.10mm $\times$ 1.25mm

(1) For all available packages, see the orderable addendum at the end of the data sheet.

## 4 Functional Block Diagram



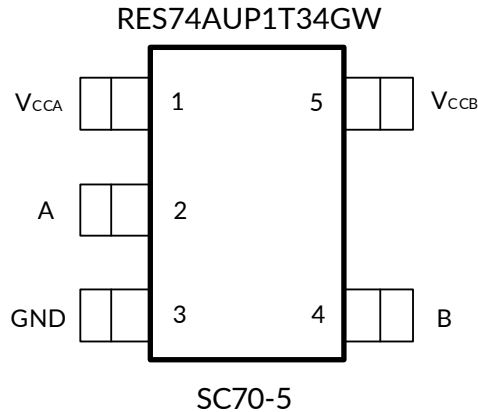
## 6 PACKAGE/ORDERING INFORMATION <sup>(1)</sup>

PRODUCT	ORDERING NUMBER	TEMPERATURE RANGE	PACKAGE LEAD	PACKAGE MARKING <sup>(2)</sup>	MSL <sup>(3)</sup>	PACKAGE OPTION
RES74AUP1T34	RES74AUP1T34GW	-40°C ~+125°C	SC70-5 <sup>(4)</sup>	RES74AUP1T34GW	MSL3	Tape and Reel, 3000

NOTE:

- (1) This information is the most current data available for the designated devices. This data is subject to change without notice and revision of this document. For browser-based versions of this data sheet, refer to the right-hand navigation.
- (2) There may be additional marking, which relates to the lot trace code information (data code and vendor code), the logo or the environmental category on the device.
- (3) MSL, The Moisture Sensitivity Level rating according to the JEDEC industry standard classifications.

## 7 PIN CONFIGURATIONS



### 7.1 PIN DESCRIPTION

RES74AUP1T34GW SC70-5	NAME	TYPE <sup>(1)</sup>	FUNCTION
1	V <sub>CCA</sub>	P	A Port Supply Voltage. $1.65V \leq V_{CCA} \leq 5.5V$
2	A	I	Input A. Reference to V <sub>CCA</sub> .
3	GND	-	Ground.
4	B	O	Output B. Reference to V <sub>CCB</sub> .
5	V <sub>CCB</sub>	P	B Port Supply Voltage. $1.65V \leq V_{CCB} \leq 5.5V$ .

(1) I=input, O=output, P=power.

### 7.2 Function Table <sup>(2)</sup>

INPUT <sup>(1)</sup>	OUTPUT
A PORT <sup>(3)</sup>	B PORT <sup>(3)</sup>
H	H
L	L

Note:

- (1) The input circuit of the data I/O is always active.
- (2) When either V<sub>CCA</sub> or V<sub>CCB</sub> is at GND level, the device goes into suspend mode.
- (3) H=High voltage level, L=Low voltage level.

## 8 SPECIFICATIONS

### 8.1 Absolute Maximum Ratings

Over operating free-air temperature range (unless otherwise noted) <sup>(1)</sup>

SYMBOL	PARAMETER		MIN	MAX	UNIT
V <sub>CCA</sub> <sup>(3)</sup>	Supply Voltage Range		-0.5	6.5	V
V <sub>CCB</sub> <sup>(3)</sup>	Supply Voltage Range		-0.5	6.5	V
V <sub>I</sub> <sup>(2)</sup>	Input Voltage Range	A port	-0.5	6.5	V
V <sub>O</sub> <sup>(2)</sup>	Voltage range applied to any output in the high-impedance or power-off state	B port	-0.5	V <sub>CCB</sub> +0.5	V
I <sub>IK</sub>	Input clamp current	V <sub>I</sub> <0		-50	mA
I <sub>OK</sub>	Output clamp current	V <sub>O</sub> <0		-50	mA
I <sub>O</sub>	Continuous output current			±50	mA
	Continuous current through V <sub>CCA</sub> , V <sub>CCB</sub> or GND			±100	mA
θ <sub>JA</sub>	Package thermal impedance <sup>(4)</sup>				°C/W
		SC70-5		376	
T <sub>J</sub>	Junction temperature <sup>(5)</sup>		-40	150	°C
T <sub>stg</sub>	Storage temperature		-65	+150	

(1) Stresses beyond those listed under Absolute Maximum Ratings may cause permanent damage to the device. These are stress ratings only, which do not imply functional operation of the device at these or any other conditions beyond those indicated under Recommended Operating Conditions. Exposure to absolute-maximum-rated conditions for extended periods may affect device reliability.

(2) The input and output negative-voltage ratings may be exceeded if the input and output current ratings are observed.

(3) The value of V<sub>CCA</sub> and V<sub>CCB</sub> are provided in the recommended operating conditions table.

(4) The package thermal impedance is calculated in accordance with JESD-51.

(5) The maximum power dissipation is a function of T<sub>J(MAX)</sub>, R<sub>θJA</sub>, and T<sub>A</sub>. The maximum allowable power dissipation at any ambient temperature is P<sub>D</sub> = (T<sub>J(MAX)</sub> - T<sub>A</sub>) / R<sub>θJA</sub>. All numbers apply for packages soldered directly onto a PCB.

### 8.2 ESD Ratings

The following ESD information is provided for handling of ESD-sensitive devices in an ESD protected area only.

			VALUE	UNIT
V <sub>(ESD)</sub>	Electrostatic discharge	Human-body model (HBM), per ANSI/ESDA/JEDEC JS-001 <sup>(1)</sup>	±2000	V
		Charged-device model (CDM), per ANSI/ESDA/JEDEC JS-002 <sup>(2)</sup>	±1500	V
		Machine Model (MM)	±200	V

(1) JEDEC document JEP155 states that 500 V HBM allows safe manufacturing with a standard ESD control process.

(2) JEDEC document JEP157 states that 250 V CDM allows safe manufacturing with a standard ESD control process.



#### ESD SENSITIVITY CAUTION

ESD damage can range from subtle performance degradation to complete device failure. Precision integrated circuits may be more susceptible to damage because very small parametric changes could cause the device not to meet its published specifications.

### 8.3 Recommended Operating Conditions

$V_{CCA}$  is the supply voltage associated with the input port.  $V_{CCB}$  is the supply voltage associated with the output port.

PARAMETER		V <sub>CCA</sub> <sup>(1)</sup>	V <sub>CCB</sub> <sup>(2)</sup>	MIN	TYP	MAX	UNIT
Supply voltage <sup>(1)</sup>	V <sub>CCA</sub>			1.65		5.5	V
	V <sub>CCB</sub>			1.65		5.5	
High-level input Voltage	V <sub>IH</sub> <sup>(4)</sup>	1.65V to 1.95V		V <sub>CCA</sub> x 0.75			V
		2.3V to 2.7V		V <sub>CCA</sub> x 0.7			
		3V to 3.6V		V <sub>CCA</sub> x 0.7			
		4.5V to 5.5V		V <sub>CCA</sub> x 0.7			
Low-level input Voltage	V <sub>IL</sub> <sup>(4)</sup>	1.65V to 1.95V				V <sub>CCA</sub> x 0.35	V
		2.3V to 2.7V				V <sub>CCA</sub> x 0.3	
		3V to 3.6V				V <sub>CCA</sub> x 0.3	
		4.5V to 5.5V				V <sub>CCA</sub> x 0.3	
Input voltage	V <sub>I</sub>			0		5.5	V
Output voltage	V <sub>O</sub>			0		V <sub>CCB</sub>	V
High-level output current (I <sub>OH</sub> )			1.65V to 1.95V			-4	mA
			2.3V to 2.7V			-8	
			3V to 3.6V			-24	
			4.5V to 5.5V			-32	
Low-level output current (I <sub>OL</sub> )			1.65V to 1.95V			4	mA
			2.3V to 2.7V			8	
			3V to 3.6V			24	
			4.5V to 5.5V			32	
Input transition rise or fall rate(Δt/Δv)	Data inputs <sup>(3)</sup>	1.65V to 1.95V				20	ns/V
		2.3V to 2.7V				20	
		3V to 3.6V				10	
		4.5V to 5.5V				5	
T <sub>A</sub> Operating free-air temperature				-40		125	°C

(1)  $V_{CCA}$  is the  $V_{CC}$  associated with the data input port.

(2)  $V_{CCB}$  is the  $V_{CC}$  associated with the output port.

(3) All unused or driven (floating) data inputs (I/Os) of the device must be held at logic HIGH or LOW (preferably  $V_{CC}$  or GND) to ensure proper device operation and minimize power.

(4) For  $V_{CCA}$  values not specified in the data sheet,  $V_{IH} \text{ min} = V_{CCA} \times 0.7 \text{ V}$ ,  $V_{IL} \text{ max} = V_{CCA} \times 0.3 \text{ V}$ .

## 8.4 Electrical Characteristics

over recommended operating free-air temperature range (unless otherwise noted) <sup>(1) (2)</sup>

PARAMETER	CONDITIONS	V <sub>CCA</sub>	V <sub>CCB</sub>	TEMP	MIN <sup>(3)</sup>	TYP <sup>(4)</sup>	MAX <sup>(3)</sup>	UNIT
V <sub>OH</sub>	I <sub>OH</sub> = -100μA V <sub>I</sub> =V <sub>IH</sub>	1.65V to 4.5V	1.65V to 4.5V	Full	V <sub>CCB</sub> - 0.1			V
	I <sub>OH</sub> = -4mA V <sub>I</sub> =V <sub>IH</sub>	1.65V	1.65V		1.2			
	I <sub>OH</sub> = -8mA V <sub>I</sub> =V <sub>IH</sub>	2.3V	2.3V		1.9			
	I <sub>OH</sub> = -24mA V <sub>I</sub> =V <sub>IH</sub>	3V	3V		2.4			
	I <sub>OH</sub> = -32mA V <sub>I</sub> =V <sub>IH</sub>	4.5V	4.5V		3.8			
V <sub>OL</sub>	I <sub>OL</sub> = 100μA V <sub>I</sub> =V <sub>IL</sub>	1.65V to 4.5V	1.65V to 4.5V				0.1	V
	I <sub>OL</sub> = 4mA V <sub>I</sub> =V <sub>IL</sub>	1.65V	1.65V				0.45	
	I <sub>OL</sub> = 8mA V <sub>I</sub> =V <sub>IL</sub>	2.3V	2.3V				0.3	
	I <sub>OL</sub> = 24mA V <sub>I</sub> =V <sub>IL</sub>	3V	3V				0.55	
	I <sub>OL</sub> = 32mA V <sub>I</sub> =V <sub>IL</sub>	4.5V	4.5V				0.55	
I <sub>I</sub>	Input leakage current	V <sub>I</sub> = V <sub>CCA</sub> or GND	1.65V to 5.5V	+25°C			±1	μA
					Full		±2	
I <sub>off</sub>	A or B Port	V <sub>I</sub> or V <sub>O</sub> = 0 to 5.5V	0V	+25°C			±1	μA
				Full			±2	
			0V to 5.5V	+25°C			±1	μA
				Full			±2	
I <sub>CCA</sub>	V <sub>CCA</sub> supply current	V <sub>I</sub> = V <sub>CCA</sub> or GND <sup>(5)</sup> I <sub>O</sub> = 0	1.65V to 5.5V	1.65V to 5.5V	Full		3	μA
			5V	0V	Full		2	
			0V	5V	Full		-2	
I <sub>CCB</sub>	V <sub>CCB</sub> supply current	V <sub>I</sub> = V <sub>CCA</sub> or GND <sup>(5)</sup> I <sub>O</sub> = 0	1.65V to 5.5V	1.65V to 5.5V	Full		3	μA
			5V	0V	Full		-2	
			0V	5V	Full		2	
I <sub>CCA</sub> + I <sub>CCB</sub>	Combined supply current	V <sub>I</sub> = V <sub>CCA</sub> or GND I <sub>O</sub> = 0	1.65V to 5.5V	1.65V to 5.5V	Full		4	μA
ΔI <sub>CCA</sub>	A port	One A port at V <sub>CCA</sub> - 0.6 V, B port = open	3V to 5.5V	3V to 5.5V	Full		50	μA
ΔI <sub>CCB</sub>	B port	One B port at V <sub>CCB</sub> - 0.6 V, A port = open	3V to 5.5V	3V to 5.5V	Full		50	μA
C <sub>I</sub>	Input capacitance	V <sub>I</sub> = GND or V <sub>CCA</sub>	0V to 3.6V	0V to 3.6V	+25°C		8.5	pF
C <sub>IO</sub>	Output capacitance	V <sub>O</sub> = GND	0V to 3.6V	0V to 3.6V	+25°C		8.5	pF

(1) V<sub>CCA</sub> is the V<sub>CC</sub> associated with the input port.

(2) V<sub>CCB</sub> is the V<sub>CC</sub> associated with the output port.

(3) Limits are 100% production tested at 25°C. Limits over the operating temperature range are ensured through correlations using statistical quality control (SQC) method.

(4) Typical values represent the most likely parametric norm as determined at the time of characterization. Actual typical values may vary over time and will also depend on the application and configuration.

(5) Hold all unused data inputs of the device at V<sub>CC</sub> or GND to assure proper device operation.

## 8.5 Timing Requirements

### 8.5.1 $V_{CCA}=1.8V \pm 0.15V$

over recommended operating free-air temperature range, Full=-40°C to 125°C.

PARAMETER	FROM (INPUT)	TO (OUTPUT)	TEMP	$V_{CCB}=1.8V \pm 0.15V^{(1)}$		$V_{CCB}=2.5V \pm 0.2V^{(1)}$		$V_{CCB}=3.3V \pm 0.3V^{(1)}$		$V_{CCB}=5V \pm 0.5V^{(1)}$		UNIT
				MIN	MAX	MIN	MAX	MIN	MAX	MIN	MAX	
$t_{PLH}$	A	B	Full	3.5	24.6	2.6	17.2	2	18.6	1.6	18.5	ns
$t_{PHL}$				3.3	18.4	2.6	15.5	2.1	16.4	2	16.8	

(1) This parameter is ensured by design and/or characterization and is not tested in production.

### 8.5.2 $V_{CCA}=2.5V \pm 0.2V$

over recommended operating free-air temperature range, Full=-40°C to 125°C.

PARAMETER	FROM (INPUT)	TO (OUTPUT)	TEMP	$V_{CCB}=1.8V \pm 0.15V^{(1)}$		$V_{CCB}=2.5V \pm 0.2V^{(1)}$		$V_{CCB}=3.3V \pm 0.3V^{(1)}$		$V_{CCB}=5V \pm 0.5V^{(1)}$		UNIT
				MIN	MAX	MIN	MAX	MIN	MAX	MIN	MAX	
$t_{PLH}$	A	B	Full	2.7	24.5	1.8	16.5	1.5	15.4	1.3	16.6	ns
$t_{PHL}$				2.5	18.4	1.6	12.7	1.5	11.3	1	10.4	

(1) This parameter is ensured by design and/or characterization and is not tested in production.

### 8.5.3 $V_{CCA}=3.3V \pm 0.3V$

over recommended operating free-air temperature range, Full=-40°C to 125°C.

PARAMETER	FROM (INPUT)	TO (OUTPUT)	TEMP	$V_{CCB}=1.8V \pm 0.15V^{(1)}$		$V_{CCB}=2.5V \pm 0.2V^{(1)}$		$V_{CCB}=3.3V \pm 0.3V^{(1)}$		$V_{CCB}=5V \pm 0.5V^{(1)}$		UNIT
				MIN	MAX	MIN	MAX	MIN	MAX	MIN	MAX	
$t_{PLH}$	A	B	Full	2.5	23.2	1.6	16.2	0.8	15.2	0.8	15.1	ns
$t_{PHL}$				2.4	15.3	1.5	12.5	0.9	10.2	0.8	10	

(1) This parameter is ensured by design and/or characterization and is not tested in production.

### 8.5.4 $V_{CCA}=5V \pm 0.5V$

over recommended operating free-air temperature range, Full=-40°C to 125°C.

PARAMETER	FROM (INPUT)	TO (OUTPUT)	TEMP	$V_{CCB}=1.8V \pm 0.15V^{(1)}$		$V_{CCB}=2.5V \pm 0.2V^{(1)}$		$V_{CCB}=3.3V \pm 0.3V^{(1)}$		$V_{CCB}=5V \pm 0.5V^{(1)}$		UNIT
				MIN	MAX	MIN	MAX	MIN	MAX	MIN	MAX	
$t_{PLH}$	A	B	Full	2.2	23.2	1.2	16.2	0.7	15.8	0.6	15.2	ns
$t_{PHL}$				2.1	14.1	1	11.4	0.8	10.4	0.6	9.5	

(1) This parameter is ensured by design and/or characterization and is not tested in production.

## 8.6 Operating Characteristics

$T_A=25^\circ\text{C}$

PARAMETER <sup>(1)</sup>		CONDITIONS	$V_{CCA}=V_{CCB}=1.8V$	$V_{CCA}=V_{CCB}=2.5V$	$V_{CCA}=V_{CCB}=3.3V$	$V_{CCA}=V_{CCB}=5V$	UNIT
			TYP	TYP	TYP	TYP	
$C_{pdA}$	A-port input, B-port output	$C_L=0$ , $f=10\text{MHz}$ , $t_r=t_f=5\text{ns}$	3	4	6	9	pF
$C_{pdB}$	A-port input, B-port output	$C_L=0$ , $f=10\text{MHz}$ , $t_r=t_f=5\text{ns}$	14	16	21	32	pF

(1) Power dissipation capacitance per transceiver.

## 8.7 Typical Characteristics

NOTE: The graphs and tables provided following this note are a statistical summary based on a limited number of samples and are provided for informational purposes only.

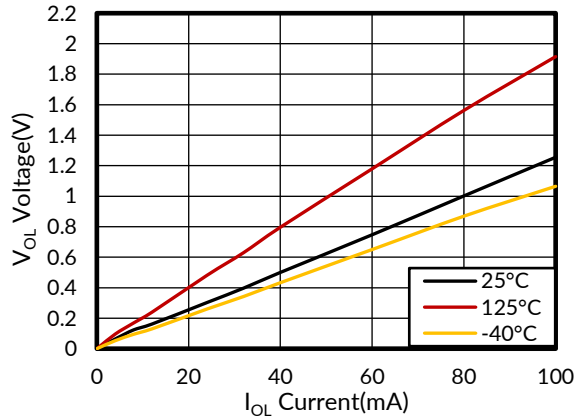


Figure 1. Voltage vs Current

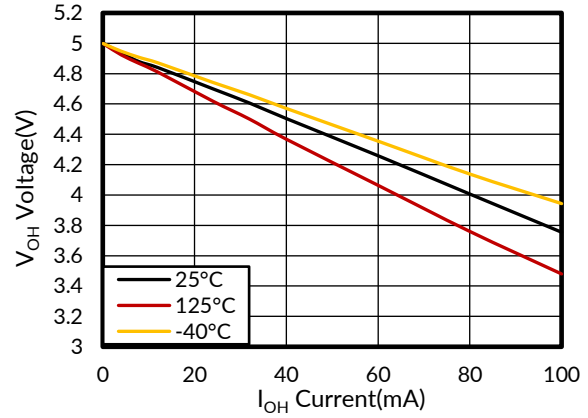
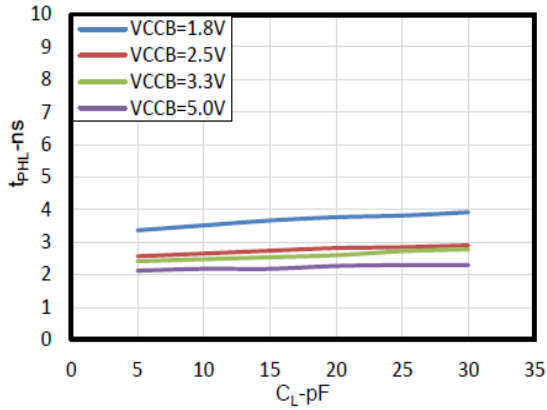
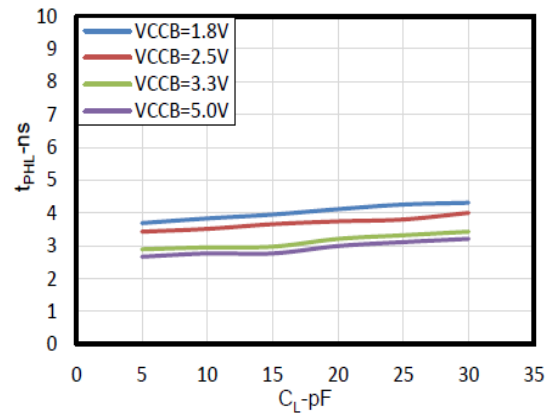


Figure 2. Voltage vs Current



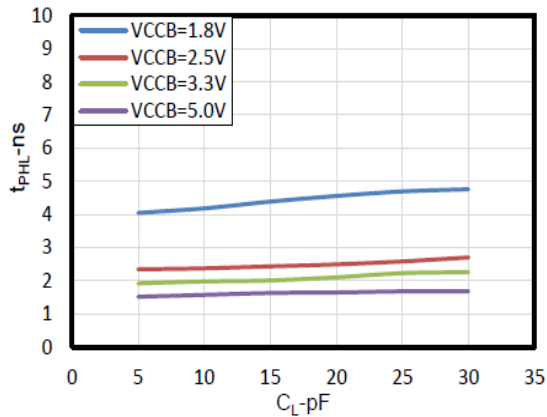
$T_A = 25^\circ\text{C}$ ,  $V_{CCA} = 1.8\text{ V}$

Figure 3. Typical Propagation Delay of High-to-Low (A to B) vs Load Capacitance



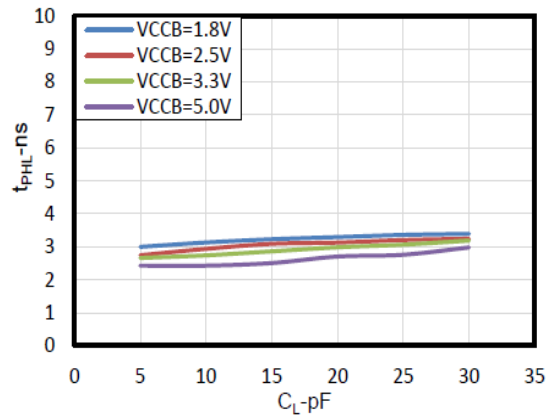
$T_A = 25^\circ\text{C}$ ,  $V_{CCA} = 2.5\text{ V}$

Figure 4. Typical Propagation Delay High-to-Low (A to B) vs Load Capacitance



$T_A = 25^\circ\text{C}$ ,  $V_{CCA} = 3.3\text{ V}$

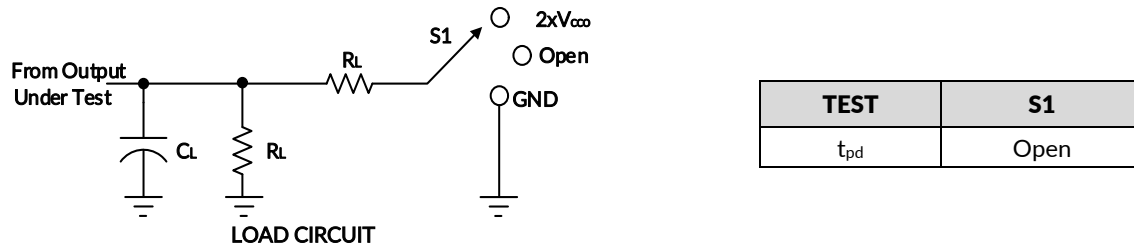
Figure 5. Typical Propagation Delay High-to-Low (A to B) vs Load Capacitance



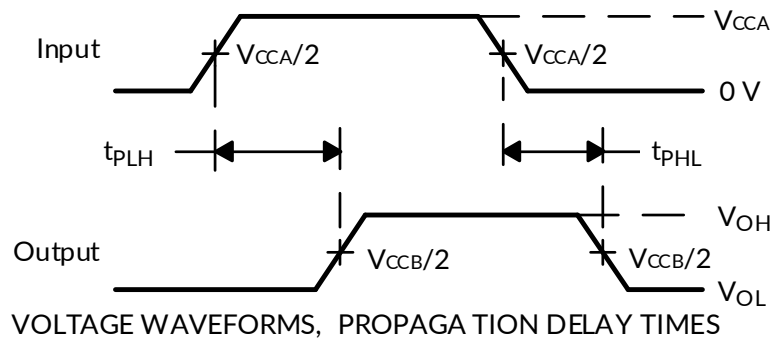
$T_A = 25^\circ\text{C}$ ,  $V_{CCA} = 5\text{ V}$

Figure 6. Typical Propagation Delay High-to-Low (A to B) vs Load Capacitance

## 9 Parameter Measurement Information



$V_{CC}$	$C_L$	$R_L$	$V_{TP}$
$1.8V \pm 0.15V$	15pF	$2k\Omega$	0.15V
$2.5V \pm 0.2V$	15pF	$2k\Omega$	0.15V
$3.3V \pm 0.3V$	15pF	$2k\Omega$	0.3V
$5V \pm 0.5V$	15pF	$2k\Omega$	0.3V



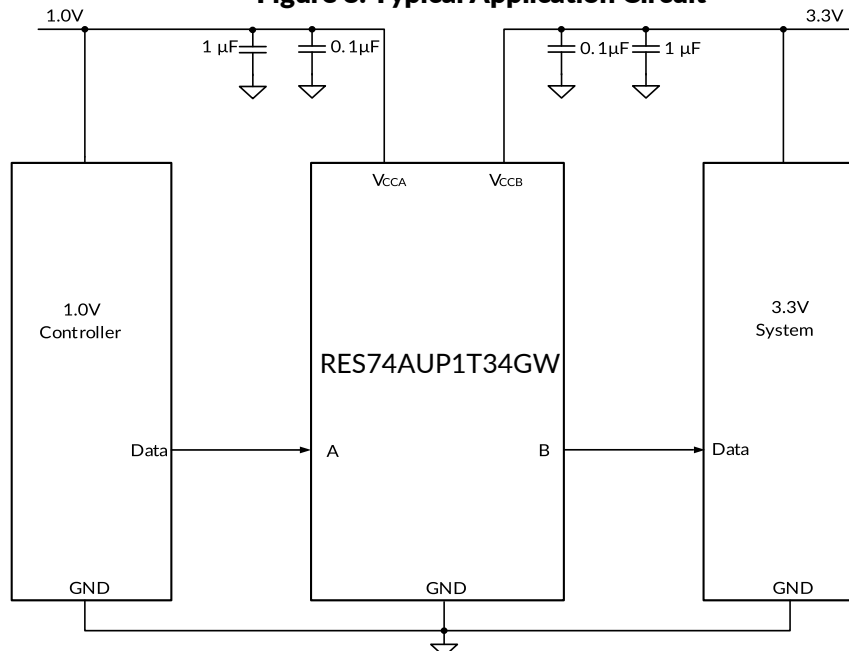
**Figure 7. Load Circuit and Voltage Waveforms**

- NOTES: A.  $C_L$  includes probe and jig capacitance.  
 B. All input pulses are supplied by generators having the following characteristics:  $PRR \leq 10$  MHz,  $Z_o = 50\Omega$ ,  $dv/dt \geq 1V/ns$ .  
 C. The outputs are measured one at a time, with one transition per measurement.  
 D.  $t_{PLH}$  and  $t_{PHL}$  are the same as  $t_{pd}$ .  
 E.  $V_{CCA}$  is the  $V_{CC}$  associated with the input port.  
 F. All parameters and waveforms are not applicable to all devices.

## 10 Application Information

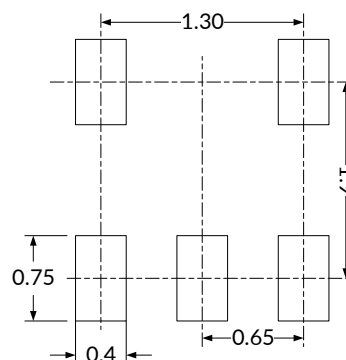
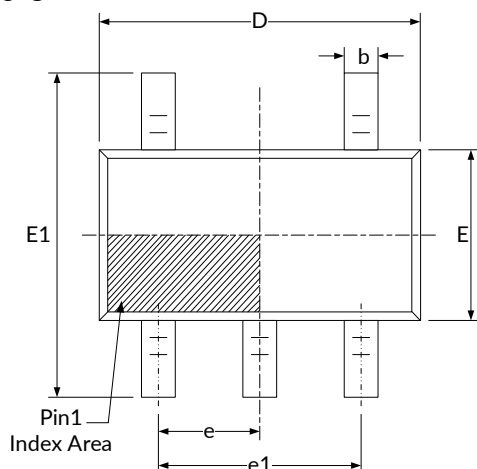
The RES74AUP1T34GW can be used in level-translation applications for interfacing devices or systems operating at different interface voltages with one another.

**Figure 8. Typical Application Circuit**

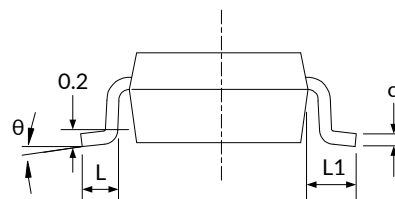
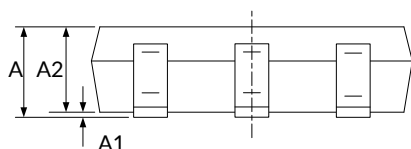




SC70-5<sup>(3)</sup>



RECOMMENDED LAND PATTERN (Unit: mm)



Symbol	Dimensions In Millimeters		Dimensions In Inches	
	Min	Max	Min	Max
A <sup>(1)</sup>	0.900	1.100	0.035	0.043
A1	0.000	0.100	0.000	0.004
A2	0.900	1.000	0.035	0.039
b	0.150	0.350	0.006	0.014
c	0.080	0.150	0.003	0.006
D <sup>(1)</sup>	2.000	2.200	0.079	0.087
E <sup>(1)</sup>	1.150	1.350	0.045	0.053
E1	2.150	2.450	0.085	0.096
e	0.650 (BSC) <sup>(2)</sup>		0.026 (BSC) <sup>(2)</sup>	
e1	1.300 (BSC) <sup>(2)</sup>		0.051 (BSC) <sup>(2)</sup>	
L	0.260	0.460	0.010	0.018
L1	0.525		0.021	
$\theta$	0°	8°	0°	8°

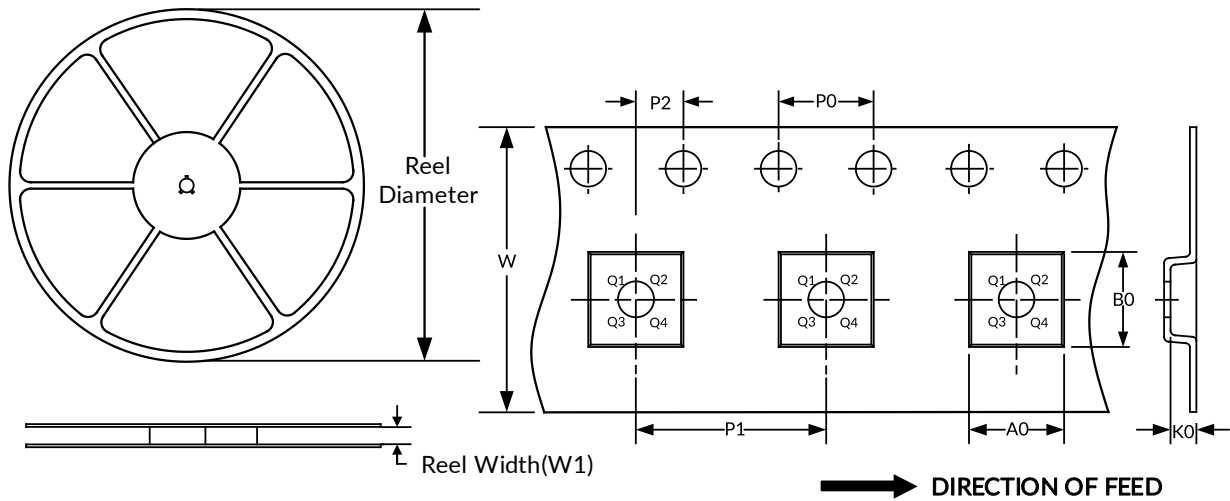
NOTE:

1. Plastic or metal protrusions of 0.15mm maximum per side are not included.
2. BSC (Basic Spacing between Centers), "Basic" spacing is nominal.
3. This drawing is subject to change without notice.

## 12 TAPE AND REEL INFORMATION

### REEL DIMENSIONS

### TAPE DIMENSION



NOTE: The picture is only for reference. Please make the object as the standard.

### KEY PARAMETER LIST OF TAPE AND REEL

Package Type	Reel Diameter	Reel Width (mm)	A0 (mm)	B0 (mm)	K0 (mm)	P0 (mm)	P1 (mm)	P2 (mm)	W (mm)	Pin1 Quadrant
SC70-5	7"	9.5	2.25	2.55	1.20	4.0	4.0	2.0	8.0	Q3

NOTE:

1. All dimensions are nominal.
2. Plastic or metal protrusions of 0.15mm maximum per side are not included.